

www.jcmglobal.com

For the latest updates on JCM Global products, services, and events, follow JCM Global on FaceBook®, Google®, LinkedIn®, Twitter™, and YouTube™



facebook.com/JCMglobal twitter.com/jcmglobal
 gplus.to/JCMglobal youtube.com/jcmglobal
 linkedin.com/company/jcm-global

Parts are Parts



UBA Calibration Kit Components

Part No. 701-100086RA

Description: UBA Calibration Kit

Usage: The UBA Calibration Kit contains the MAG Board Tool with Power Supply, a MAG Calibration Card, and three (3) Calibration Reference Papers. The UBA Calibration Kit is used in conjunction with the Sensor Adjustment program, included with the JCM Tool Suite.

Note: The UBA may require calibration when one of the Printed Circuit Boards, Sensors, or the CPU Board is removed or replaced. If performance is not at acceptable levels after the UBA has been cleaned, calibration is recommended.

Latest JCM Software Listing

UNIT	Country	ID	Version	Check Sum	CRC
UBA-10/11-SS	USA	ID-003	V-2.30-44	1FCF	AC05
UBA-10/11-SS	USA	ID-024	V-2.30-19	8E4E	3922
UBA-14/24-SS/SU	USA	ID-003	V-2.08-23		6B08
UBA-14/24-SS/SU	USA	ID-0G8	V-2.08-66		31E6
UBA-14/24-SS/SU	USA	ID-024	V-2.08-28		6359
UBA-14/24-SS/SU	USA	ID-028	V-2.30-20		8923
iVIZION-SS/SU	USA	ID-003	V-1.84-23		E8E1
iVIZION-SS/SU	USA	ID-024	V-1.84-12		15C7
iVIZION-SS/SU	USA	ID-028	V-1.84-25		C9A3
UBA-10/11-SS	CAN	ID-003	V-2.32-45	DEA2	F67E
UBA-10/11-SS	CAN	ID-024	V-2.32-20	8D4B	F67E
UBA-14/24-SS/SU	CAN	ID-003	V-2.32-31	DBC7	83D6
UBA-14/24-SS/SU	CAN	ID-024	V-2.32-31		F4DA
UBA-14/24-SS/SU	CAN	ID-028	V-2.32-21		AEC9
UBA-14/24-SS/SU	CAN	ID-0G8	V-2.32-70		3FE4
iVIZION-100 SS/SU	CAN	ID-003	V-1.86-24		7075
iVIZION-100 SS/SU	CAN	ID-024	V-1.86-13		C2D3
iVIZION-100 SS/SU	CAN	ID-028	V-1.86-25		4646
iVIZION-100 SS/SU	CAN	ID-0G8	V-1.86-22		4F7F

The JCM Banknote Validator Software list provided herein notifies customers of the latest developed software versions. However, the listing does not identify versions approved by Gaming Jurisdictional Authorities for actual use. Customers should always consult JCM's Parts Sales Department to verify versions approved for use in their specific jurisdictions intended for operation.

Current Service Manual Releases

Product	Rev.	Product	Rev.
BlueWave DX (German)	A*	iVIZION	3
DBV-30X	4	Taiko (PUB-7/11)	3
DT-200 BlueWave 2	4	TBV	1
EBA-3X	4	TBV-101-ASH	A
ICB Service Manual	4	UBA 10/11/14/24/25	3b
ICB Web Reports Ops Manual	1	UBA-RC	A
iPRO	A	VEGA-RC	1
iPRO-RC	A		

* NOTE: Release updated this Month.

Improve Efficiency, Get Information Quickly with JCM's Sentry® 2 Bezel

The new Sentry 2 Bezel uses the latest technology to display Customer prompts and custom graphics. The Sentry 2 supports multiple languages for Customer prompts, as well as a separate language available for Attendants and Technicians. Settle disputes quickly with a single click of the Key FOB. When clicked, the last 5 Banknotes of TITO Tickets inserted will be displayed, along with their direction of insertion. Attendants can quickly determine the status of the Cash Box, Validator Acceptance Rate and Software information, all without opening a Game Door.





FREE REGIONAL TRAINING

Give your technicians the tools they need to keep your customers happy and your equipment running at peak efficiency.

For the local and regional training schedule, visit:

<http://www.jcmglobal.com>

Technical Bulletin 201303 March 2013

Technical Tips

Question: What is the process for calibrating the UBA?

Answer: First, verify that the **JCM Tool Suite Application v1.18** and **Sensor Adjustment Application v1.9.0.0** are installed.

Note: JCM Tool Suite v1.18 includes the Sensor Adjustment Application v1.9.0.0, and is available for downloading at no charge from the following site: <http://www.jcmglobal.com/en/support/downloads/tools.aspx>

Next, use the following procedure to calibrate the UBA:

1. Thoroughly clean the UBA Sensor lens and bill path.
2. Connect the UBA to a PC using a standard USB Cable.
3. Apply power to the UBA.
4. Launch the JCM Tool Suite Application.
5. Click to select "Sensor Adjustment" in the **Service Mode** drop-down window (Figure 1).
6. Click **Start** to begin the Sensor Adjustment procedure (Figure 2).

The full Sensor Adjustment process is documented in Section 6 of the **UBA Service Manual**. This document is available at no charge from the following site:

<http://www.jcmglobal.com/en/support/downloads/manuals.aspx>.

For additional information, contact your local JCM Sales Representative at (800) 683-7248.

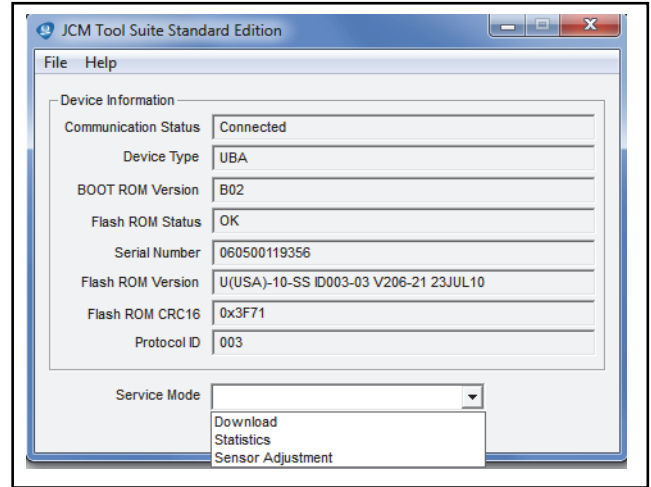


Figure 1: JCM Tool Suite Application (v1.18)

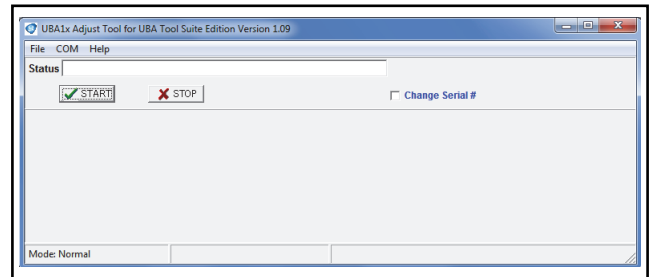


Figure 2: UBA Adjust Tool Application (Sensor Adjustment)



JCM TECHNICAL SUPPORT CONTACTS

Headquarters (Japan)

Sales and Service | 81-6-6703-8405 | hq-jp@jcmglobal.com

Europe, Africa, Russia, Middle East

Sales and Service | 49-211-530645-0 | hq-eu@jcmglobal.com

Australia, Oceania

Sales and Service | 61-2 9648 0811 | ipayne@jcmglobal.com

Southeast Asia

Sales and Service | 853 28 72 2648 | asiapactechsupport@jcmglobal.com

North/South America/Canada/Caribbean

Toll Free Product Support | (800) 683-7248 or (702) 651-0000 | techsupport@jcmglobal.com

After Hours Americas Support

JCM American prides itself in offering the best Customer Service in the industry. We offer a 24 hour After Hours Hotline, where Technical Support Personnel can be reached at any time, 7 days a week. To reach our 24/7 After Hours Hotline:
 1.) Call JCM American at (800) 683-7248.
 2.) Select "Option 1" and wait for the call to be transferred to the JCM after hours Technical Support line.
 3.) Speak with a certified JCM Support Technician about your situation.

JCM is a registered trademark of JCM American Corporation. All other product names mentioned herein may be registered trademarks or trademarks of their respective companies. Furthermore, TM and ® are not mentioned in each case in this publication.