

www.jcmglobal.com

For updates on JCM Global products, services, and events, follow JCM Global on Facebook®, LinkedIn®, Twitter™ and YouTube™



facebook.com/JCMglobal

twitter.com/jcmglobal

linkedin.com/company/jcm-global

youtube.com/jcmglobal

Parts are Parts

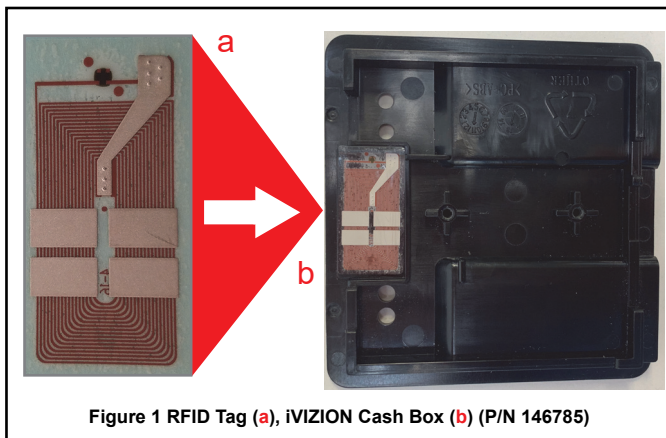


Figure 1 RFID Tag (a), iVIZION Cash Box (b) (P/N 146785)

Part No. 146785

Description: RFID Tag, iVIZION® Cash Box

Usage: The JCM iVIZION Banknote Acceptor includes Intelligent Cash Box (ICB®) System support as a standard feature. iVIZION Units use Radio Frequency Identification (RFID) to transfer ICB data from the iVIZION Transport to the RFID Tag in the iVIZION Cash Box. The RFID Tag performs as a memory chip, storing information about Banknote Acceptance and iVIZION Unit Performance.

Note: The RFID Tag (Figure 1 a) is a passive device, and is only active in close proximity to the iVIZION transmitter/receiver. The RFID Tag is extremely reliable, with expected read/write cycles averaging well over 1 billion cycles.

Latest JCM Software Listing

UNIT	Country	ID	Version	Check Sum	CRC
UBA-10/11-SS	USA	ID-003	V-2.82-52	4BDC	6359
UBA-10/11-SS	USA	ID-024	V-2.82-25	3BF2	6D5B
UBA-14/24-SS/SU	USA	ID-003	V-2.82-40	0E53	2F46
UBA-14/24-SS/SU	USA	ID-0G8	V-2.82-74	F823	AE34
UBA-14/24-SS/SU	USA	ID-024	V-2.82-37	FED2	F6EB
UBA-14/24-SS/SU	USA	ID-028	V-2.82-25	190A	0653
iVIZION-100 SS/SU	USA	ID-003	V-2.84-44	94D4	0789
iVIZION-100 SS/SU	USA	ID-008	V-2.83-22	7DEB	39B4
iVIZION-100 SS/SU	USA	ID-024	V-2.84-15	C0FC	652D
iVIZION-100 SS/SU	USA	ID-028	V-2.84-30	DB30	7EBB
iVIZION-100 SS/SU	USA	ID-0G8	V-2.84-39	E589	DA07
UBA-10/11-SS	CAN	ID-003	V-2.82-52	B445	56DD
UBA-10/11-SS	CAN	ID-024	V-2.82-25	8FC3	D9AD
UBA-14/24-SS/SU	CAN	ID-003	V-2.82-40	CEF6	5E8C
UBA-14/24-SS/SU	CAN	ID-024	V-2.82-37	C66F	E2BE
UBA-14/24-SS/SU	CAN	ID-028	V-2.82-25	FD47	E01A
UBA-14/24-SS/SU	CAN	ID-0G8	V-2.82-74	F0D0	9716
iVIZION-100 SS/SU	CAN	ID-003	V-2.82-44	5B45	208A
iVIZION-100 SS/SU	CAN	ID-024	V-2.82-15	C6B6	8D4D
iVIZION-100 SS/SU	CAN	ID-028	V-2.82-30	C8BB	0AAA
iVIZION-100 SS/SU	CAN	ID-0G8	V-2.82-38	5784	92A2

The Latest JCM Software Listing (shown above) identifies specific software versions that have been released to OEMs. It is the responsibility of the OEM to obtain all required approvals from Gaming Regulators and Jurisdictional Authorities necessary for use of approved software versions. Contact the Game Manufacturer (OEM) for information on specific software releases approved for use within your gaming jurisdiction.

JCM recommends using the latest version for maximum acceptance, security, and performance.

JCM Service Offerings

JCM offers the following services to help keep your JCM Products performing within factory specifications:

- Warranty and Non-Warranty Service and Repair
- Custom Training Classes
- Unit Exchange Programs
- Preventive Maintenance Programs
- ICB Data Analysis
- Validator Performance Analysis

JCM Global® Is The Source For All Your Video Needs!

JCM Global incorporates the latest digital display technology (single screen to large scale video wall solutions), digital content creation services and networked solutions for all your media needs. JCM Global products combine unsurpassed color uniformity and the best pixel-to-pixel resolution available in the Gaming industry in an easy-to-install package. JCM Global MAX-S provides a high-resolution interlocking panel solution for large scale LED Video screens. JCM Global FLEX offers articulating panels for curved surface implementations. JCM Global CUBE supports 3-D Video Displays and JCM Global ELEMENTS supports outdoor installations. For details, visit the JCM Global website at www.jcmglobal.com!





FREE ONLINE TRAINING

Technicians need training, but is time or class availability a problem? JCM Online Training offers classes to meet your schedule and your needs. JCM Online Training Programs feature the same content as JCM On-site Training with the added convenience of flexible scheduling. Visit training.jcmglobal.com for more information or to register for classes.

Technical Bulletin 201905 May 2019

Technical Tip

Question: Is an updated version of the JCM® DFU Downloader Software Tool available? What changes have been made?

Answer: JCM has released Version 2.3.1 of the JCM DFU Downloader Software Tool (**Figure 2**). The JCM DFU Downloader has been modified to use Windows® 10 certified Printer Drivers, for improved connections with Windows 10 (all builds) and better communication with JCM GEN2U™, GEN5™ and CouponXpress™ Thermal Printers.

Note: .NET Framework 2.0.50727 (or later) must be installed on your desktop PC to use JCM DFU Downloader Software Tool V2.3.1. The JCM DFU Downloader Software Tool V2.3.1 can be downloaded from the Software Tools section of the JCM Global website at www.jcmglobal.com.

For additional information on the JCM DFU Downloader Software Tool and other JCM Products, visit the JCM Global website at www.jcmglobal.com, or contact your local JCM Sales Representative at (800) 683-7248.

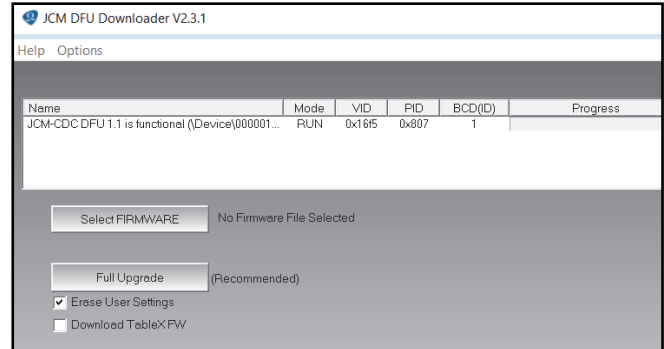


Figure 2 JCM DFU Downloader V2.3.1 User Interface (cut-away)

Current Service Manual Releases

Product	Rev.	Product	Rev.
DBV-30X	4	iVIZION	7
DBV-500 Operations Manual	1	Taiko (PUB-7/11)	6
DBV-400 Operations Manual	1	TBV	3
DT-200 BlueWave 2	7	TBV-101-ASH	A
EBA-40	2	UBA-10/11/14/24/25	3b
ICB Service Manual	4	UBA-RC	3
ICB 3.0 Web Reports Ops Manual	3	VEGA	4
iPRO	2	VEGA-RC	3
iPRO-RC	3	FL Operator & Technician's Manual	3
RC-10 Service Manual	1	GEN5 Operations Manual	2
JCM Tool Suite	4	BlueWaveDX Tool (DT-300)	1

To access JCM Product Manuals, please visit: www.jcmglobal.com



JCM TECHNICAL SUPPORT CONTACTS

Headquarters (Japan)

Sales and Service +81-3-5962-3731 hq-jp@jcmglobal.com

Europe, Middle East, Africa, Russia

Sales +49-211-530645-50
Service +49-211-530645-60 support@jcmglobal.eu

Australia, Oceania

Sales and Service +612 96 48 0811 australia@jcmglobal.com

Southeast Asia

Sales and Service +853 28 72 2684 asiastupport@jcmglobal.com

North/South America/Canada/Caribbean

Toll Free Product Support (800) 683-7248 or (702) 651-0000 support@jcmglobal.com

After Hours Americas Support

JCM American prides itself in offering the best Customer Service in the industry. We offer a 24 hour After Hours Hotline, where Technical Support Personnel can be reached at any time, 7 days a week. To reach our 24/7 After Hours Hotline:
1.) Call JCM American at (800) 683-7248.
2.) Select "Option 1" and wait for the call to be transferred to the JCM after hours Technical Support line.
3.) Speak with a certified JCM Support Technician about your situation.

JCM Global is a registered trademark of JCM American Corporation. All other product names mentioned herein may be registered trademarks or trademarks of their respective companies. Furthermore, TM and © are not mentioned in each case in this publication.