

www.jcmglobal.com

For updates on JCM Global products, services, and events, follow JCM Global on Facebook®, LinkedIn®, Twitter™ and YouTube™



facebook.com/JCMglobal

twitter.com/jcmglobal

linkedin.com/company/jcm-global

youtube.com/jcmglobal

Parts are Parts

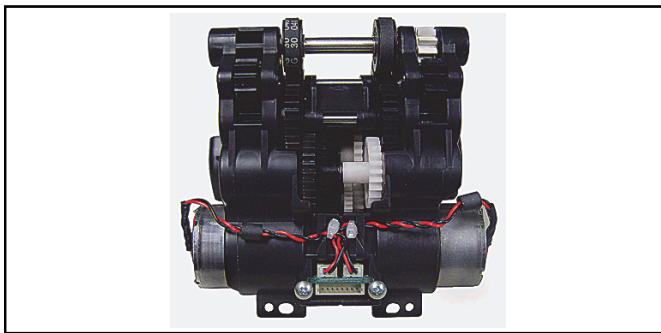


Figure 1 iVIZION® Motor Gear Assembly (P/N 244646)

Part No. 244646

Description: iVIZION® Motor Gear Assembly

Usage: The JCM iVIZION® Motor Gear Assembly (Figure 1) provides Transport and Stacking functions in a compact, easy to replace assembly. It is used on both the iVIZION SS and iVIZION SU Banknote Validators. Recent design changes continue to improve the Motor Gear Assembly's product performance and reliability, including:

- Replacement of Both Gear Transport Stacking 1 Gears - promotes smoother document movement through the Transport and Validator Head;
- Pulley Phase Matching - promotes extended product life of the Motor Gear Assembly Belts.

Latest JCM Software Listing

UNIT	Country	ID	Version	Check Sum	CRC
UBA-10/11-SS	USA	ID-003	V-2.78-51	D6F5	0653
UBA-10/11-SS	USA	ID-024	V-2.78-24	9478	0C33
UBA-14/24-SS/SU	USA	ID-003	V-2.78-39	C51D	9914
UBA-14/24-SS/SU	USA	ID-0G8	V-2.78-73	6E61	AE34
UBA-14/24-SS/SU	USA	ID-024	V-2.78-36	5CC9	9374
UBA-14/24-SS/SU	USA	ID-028	V-2.78-25	91A6	8F70
iPRO-101	USA	ID-003	V-2.30-25	3112	6B08
iPRO-101	USA	ID-024	V-2.00-10	7CC4	0462
iPRO-101	USA	ID-028	V-1.77-04		2717
iPRO-101	USA	ID-0G8	V-2.20-07	F257	8343
iPRO-101	USA	ID-008	V-1.82-02	0584	48E8
iVIZION-100 SS/SU	USA	ID-003	V-2.53-38	DB41	44F9
iVIZION-100 SS/SU	USA	ID-008	V-2.56-20	3B11	1534
iVIZION-100 SS/SU	USA	ID-024	V-2.53-15	F6E4	21DD
iVIZION-100 SS/SU	USA	ID-028	V-2.53-30	6F1A	1FD5
iVIZION-100 SS/SU	USA	ID-0G8	V-2.53-29	2EBE	A0BB
UBA-10/11-SS	CAN	ID-003	V-2.78-51	4911	C70D
UBA-10/11-SS	CAN	ID-024	V-2.78-24	1A12	C1CB
UBA-14/24-SS/SU	CAN	ID-003	V-2.78-39	3DB8	5CBD
UBA-14/24-SS/SU	CAN	ID-024	V-2.78-37	6A03	3A04
UBA-14/24-SS/SU	CAN	ID-028	V-2.78-25	51B9	1EA0
UBA-14/24-SS/SU	CAN	ID-0G8	V-2.78-73	627C	B8C5
iPRO-100	CAN	ID-003	V2.31-26	F3F1	54EC
iPRO-100	CAN	ID-008	V1.82-02	8572	0CA6
iPRO-100	CAN	ID-024	V-2.31-12	7D39	1C91
iPRO-100	CAN	ID-028	V-2.31-06	D789	0653
iVIZION-100 SS/SU	CAN	ID-003	V-2.50-37	7031	16D3
iVIZION-100 SS/SU	CAN	ID-024	V-2.23-15	C0BA	713F
iVIZION-100 SS/SU	CAN	ID-028	V-2.23-29	961E	09D4
iVIZION-100 SS/SU	CAN	ID-0G8	V-2.51-29	06B5	7DD8

The Latest JCM Software Listing (shown above) identifies specific software versions that have been released to OEMs. It is the responsibility of the OEM to obtain all required approvals from Gaming Regulators and Jurisdictional Authorities necessary for use of approved software versions. Contact the Game Manufacturer (OEM) for information on specific software releases approved for use within your gaming jurisdiction.

JCM recommends using the latest version for maximum acceptance, security, and performance.

JCM Service Offerings

JCM® offers the following services to help keep your JCM Products performing within factory specifications:

Warranty and Non-Warranty Service and Repair

Preventive Maintenance Programs

Custom Training Classes

ICB Data Analysis

Unit Exchange Programs

Validator Performance Analysis

The JCM Global® Exchange Website Is Now Live!

The new JCM Global Exchange website at exchange.jcmglobal.com provides JCM Customers with a secure digital download site for faster access to approved Bill Validator and Printer Software. The JCM Global Exchange site provides 24/7 logon and access to firmware files linked to your product, decreasing EGM downtime and saving customers time and money by eliminating delays in access to approved software and firmware updates. In addition, JCM Customers enjoy email notification of new updates as they become available, with site access for up to five (5) registered Authorized Users per property. To register, login and set up your account, please visit the JCM Global Exchange website at exchange.jcmglobal.com!





FREE REGIONAL TRAINING

Give your technicians the tools they need to keep your customers happy and your equipment running at peak efficiency.

For details on upcoming JCM Global Regional Training Events, go to: www.jcmglobal.com

Technical Bulletin 201606 June 2016

Technical Tips

Question: Which application is available for testing a JCM® GEN Series Printer?

Answer: JCM Global has released the JCM Printer Basic Driver Application (**Figure 2**). This application allows functional testing of GEN2™, GEN2U™ or GEN3™ Printers by printing a Test Ticket.

The **Printer Configuration** interface displays the current firmware version installed and the Printer's communication settings.

The **Printer Status** section provides visual indication of all Sensor Status' and any errors.

The **Commands** section provides the following Printer testing options:

- **Reset** - Resets the Printer;
- **Clear** - Clears the Printer Status fields;
- **Feed** - Feeds a blank Ticket through the Printer;
- **Print Ticket Information** - Prints a Test Ticket with Communications and Printer Setup Information;
- **Get Value** - Retrieves the Printer's CRC values.

The JCM Printer Basic Driver Application is available at no charge from the JCM Global website at www.jcmglobal.com. To download it, click the **Support** tab, then click **Downloads > Software Tools > JCM Printer Driver**.

For additional information on JCM Products, visit the JCM Global website at www.jcmglobal.com, or contact your local JCM Sales Representative at (800) 683-7248.

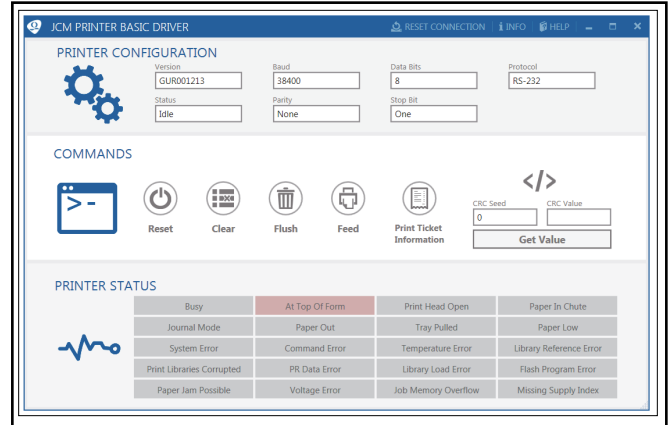


Figure 2 JCM Printer Basic Driver Application User Interface

Current Service Manual Releases

Product	Rev.	Product	Rev.
DBV-30X	4	iVIZION	6
DBV-500 Operations Manual	A	Taiko (PUB-7/11)	6
DBV-400 Operations Manual	A	TBV	2
DT-200 BlueWave 2	7	TBV-101-ASH	A
EBA-40	1	UBA-10/11/14/24/25	3b
ICB Service Manual	4	UBA-RC	2
ICB 3.0 Web Reports Ops Manual	A	VEGA	3
iPRO	1	VEGA-RC	3
iPRO-RC	2	FLDFU Download Manual	3
RC-10 Service Manual	1	FL Operator & Technician's Manual	3
JCM Tool Suite	4		

To access JCM Product Manuals, please visit: www.jcmglobal.com



JCM TECHNICAL SUPPORT CONTACTS

Headquarters (Japan)		
Sales and Service	+81-3-5962-3731	hq-jp@jcmglobal.com
Europe, Middle East, Africa, Russia		
Sales	+49-211-530645-50	hq-eu@jcmglobal.com
Service	+49-211-530645-60	
Australia, Oceania		
Sales and Service	+612 96 48 0811	australia@jcmglobal.com
Southeast Asia		
Sales and Service	+853 28 72 2684	asiasupport@jcmglobal.com
North/South America/Canada/Caribbean		
Toll Free Product Support	(800) 683-7248 or (702) 651-0000	techsupport@jcmglobal.com
After Hours Americas Support		
<p>JCM American prides itself in offering the best Customer Service in the industry. We offer a 24 hour After Hours Hotline, where Technical Support Personnel can be reached at any time, 7 days a week. To reach our 24/7 After Hours Hotline:</p> <ol style="list-style-type: none"> 1.) Call JCM American at (800) 683-7248. 2.) Select "Option 1" and wait for the call to be transferred to the JCM after hours Technical Support line. 3.) Speak with a certified JCM Support Technician about your situation. 		

JCM is a registered trademark of JCM American Corporation. All other product names mentioned herein may be registered trademarks or trademarks of their respective companies. Furthermore, TM and ® are not mentioned in each case in this publication.