



# Technical Bulletin 201504

www.jcmglobal.com

For updates on JCM Global products, services, and events, follow JCM Global on FaceBook®, Google®, LinkedIn®, Twitter™ and YouTube™



facebook.com/JCMglobal

twitter.com/jcmglobal

Gplus.to/JCMglobal

youtube.com/jcmglobal

linkedin.com/company/jcm-global

## Latest JCM Software Listing

UNIT	Country	ID	Version	Check Sum	CRC
UBA-10/11-SS	USA	ID-003	V-2.71-51	F144	402C
UBA-10/11-SS	USA	ID-024	V-2.71-24	3F71	89E4
UBA-14/24-SS/SU	USA	ID-003	V-2.71-73	B737	F21C
UBA-14/24-SS/SU	USA	ID-0G8	V-2.71-72	3511	F558
UBA-14/24-SS/SU	USA	ID-024	V-2.71-36	0517	467F
UBA-14/24-SS/SU	USA	ID-028	V-2.71-25	0BC8	B2A5
iPRO-101	USA	ID-003	V-2.00-20	1312	8343
iPRO-101	USA	ID-024	V-2.00-10	7CC4	0462
iPRO-101	USA	ID-028	V-1.77-04		2717
iPRO-101	USA	ID-0G8	V-2.00-06	48DF	E2BE
iPRO-101	USA	ID-008	V-1.82-02	0584	48E8
iVIZION-100 SS/SU	USA	ID-003	V-2.39-37	798B	AAE1
iVIZION-100 SS/SU	USA	ID-008	V-2.37-18	C350	A5A0
iVIZION-100 SS/SU	USA	ID-024	V-2.39-15	F6BC	16FD
iVIZION-100 SS/SU	USA	ID-028	V-2.39-29	C481	F99C
iVIZION-100 SS/SU	USA	ID-0G8	V-2.14-25		3666
UBA-10/11-SS	CAN	ID-003	V-2.53-50	A351	7FC8
UBA-10/11-SS	CAN	ID-024	V-2.53-23	714C	1455
UBA-14/24-SS/SU	CAN	ID-003	V-2.52-37	959B	B001
UBA-14/24-SS/SU	CAN	ID-024	V-2.52-34		3F71
UBA-14/24-SS/SU	CAN	ID-028	V-2.52-24		B094
UBA-14/24-SS/SU	CAN	ID-0G8	V-2.52-72		AEA1
iPRO-100	CAN	ID-003	V2.20-23	C4F3	2D77
iPRO-100	CAN	ID-008	V2.82-02	0CA6	0CA6
iPRO-100	CAN	ID-024	V-2.20-12	AFBC	81E7
iPRO-100	CAN	ID-028	V-2.20-06	A5E8	0462
iVIZION-100 SS/SU	CAN	ID-003	V-2.23-37	3742	FFB2
iVIZION-100 SS/SU	CAN	ID-024	V-2.23-15	C0BA	713F
iVIZION-100 SS/SU	CAN	ID-028	V-2.23-29	961E	09D4
iVIZION-100 SS/SU	CAN	ID-0G8	V-2.23-28	C967	55F9

## Parts are Parts

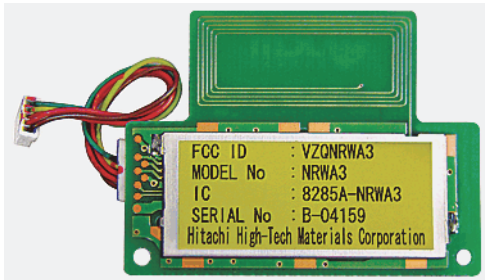


Figure 1 iVIZION® Radio Frequency (RFID) Module (P/N 146783)

Part No. 146783

**Description:** iVIZION® Radio Frequency Module

**Usage:** The RFID Module (**Figure 1**) transmits Intelligent Cash Box (ICB) information to the RFID Tag located in the iVIZION Cash Box. The RFID module in the iVIZION is easily activated and initialized using the JCM Tool Suite Application. When the RFID module is in close proximity to an ICB-enabled Cash Box, information can be transmitted more effectively, eliminating alignment issues and improving data transfer accuracy. RFID Technology allows efficient, precise data transfers between the RFID module, the Cash Box RFID Tag and the Count Room's Docking Station.

The Latest JCM Software Listing (shown above) identifies specific software versions that have been released to OEMs. It is the responsibility of the OEM to obtain all required approvals from Gaming Regulators and Jurisdictional Authorities necessary for use of approved software versions. Contact the Game Manufacturer (OEM) for information on specific software releases approved for use within your gaming jurisdiction.

JCM recommends using the latest version for maximum acceptance, security, and performance.

## JCM Service Offerings

JCM® offers the following services to help keep your JCM Products performing within factory specifications:

Warranty and Non-Warranty Service and Repair

Preventive Maintenance Programs

Custom Training Classes

ICB Data Analysis

Unit Exchange Programs

Validator Performance Analysis

## Enhance Your Customers' Experience with PromoNet®

JCM Global's PromoNet® behavioral-based Promotional Couponing solution expands a Casino's ability to recognize and reward Anonymous High-Value and Most Valuable Players, and enhance Player satisfaction across multiple venues. PromoNet can immediately issue rewards to Targeted Players who meet pre-defined criteria, avoiding mail delays and trips to the Players Club. PromoNet Promotions and Rewards can be tailored for Most Valuable Players, while Targeted Promotions can transform non-gaming visits and activities into lucrative "Win-Win" opportunities for your customers and your Venue!





# FREE REGIONAL TRAINING

Give your technicians the tools they need to keep your customers happy and your equipment running at peak efficiency.

For the local and regional training schedule, visit:

<http://www.jcmglobal.com>

Technical Bulletin 201504 April 2015

## Technical Tips

**Question:** What changes were made to the new version of JCM Tool Suite now available on the JCM Global website?

**Answer:** JCM Tool Suite Version 1.28 (**Figure 2**) includes updates to the Download, Statistics and Calibration applications. These updates include:

- Improved Calibration Procedures featuring an additional verification step for UBA and TBV Units.
- Improved Calibration for the iVIZION Units.
- Download support has been added for EBA-40, DBV-400 and DBV-500 Banknote Validators.

The JCM Tool Suite Version 1.28 can be downloaded from the JCM Global website at <http://am-en.jcmglobal.com/files/software-tools/>.

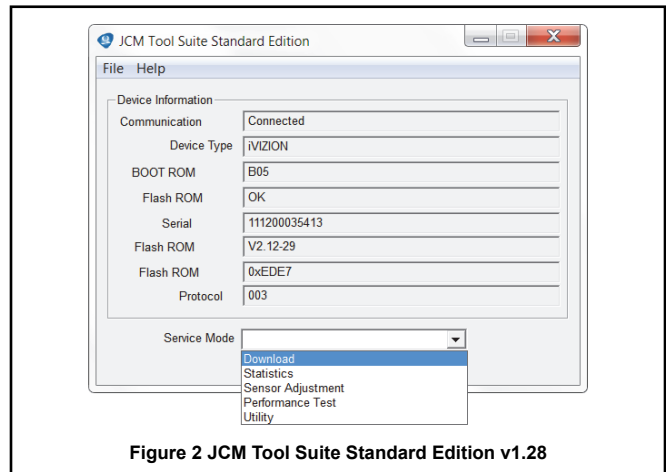


Figure 2 JCM Tool Suite Standard Edition v1.28

For additional information on JCM Products, visit the JCM Global website at [www.jcmglobal.com](http://www.jcmglobal.com), or contact your local JCM Sales Representative at (800) 683-7248.

## Current Service Manual Releases

Product	Rev.	Product	Rev.
DBV-30X	4	JCM Tool Suite	3
DBV-500 Operations Manual	A	iVIZION	5
DBV-500 Integration Guide	A	Taiko (PUB-7/11)	5
DBV-400 Operations Manual	A	TBV	2
DT-200 BlueWave 2	5	TBV-101-ASH	A
EBA-40	A	UBA-10/11/14/24/25	3b
ICB Service Manual	4	UBA-RC	1
ICB 3.0 Web Reports Ops Manual	A	VEGA	3
iPRO	1	VEGA-RC	2
iPRO-RC	1	FLDFU Download Manual	3
RC-10 Service Manual	1	FL Operator & Technician's Manual	3

To access JCM Product Manuals, please visit:  
<http://am-en.jcmglobal.com/files/product-manuals/>

JCM/FUTURELOGIC TECHNICAL SUPPORT CONTACTS		
<b>Headquarters (Japan)</b>		
Sales and Service	+81-3-5962-3731	hq-jp@jcmglobal.com
<b>Europe, Africa, Russia, Middle East</b>		
Sales	+49-211-530645-50	hq-eu@jcmglobal.com
Service	+49-211-530645-60	
<b>Australia, Oceania</b>		
Sales and Service	+612 96 48 0811	australia@jcmglobal.com
<b>Southeast Asia</b>		
Sales and Service	+853 28 72 2684	asiapactechsupport@jcmglobal.com
<b>North/South America/Canada/Caribbean</b>		
Toll Free Product Support	(800) 683-7248 or (702) 651-0000	techsupport@jcmglobal.com slottechsupport@futurelogicinc.com
<b>After Hours Americas Support</b>		
<p>JCM American prides itself in offering the best Customer Service in the industry. We offer a 24 hour After Hours Hotline, where Technical Support Personnel can be reached at any time, 7 days a week. To reach our 24/7 After Hours Hotline:</p> <p>1.) Call JCM American at (800) 683-7248.            2.) Select "Option 1" and wait for the call to be transferred to the JCM after hours Technical Support line.            3.) Speak with a certified JCM Support Technician about your situation.</p>		

JCM is a registered trademark of JCM American Corporation. All other product names mentioned herein may be registered trademarks or trademarks of their respective companies. Furthermore, TM and ® are not mentioned in each case in this publication.