

[www.jcmglobal.com](http://www.jcmglobal.com)

For updates on JCM Global products, services, and events, follow JCM Global on Facebook®, LinkedIn®, Twitter™ and YouTube™



[facebook.com/JCMglobal](https://facebook.com/JCMglobal)

[twitter.com/jcmglobal](https://twitter.com/jcmglobal)

[linkedin.com/company/jcm-global](https://linkedin.com/company/jcm-global)

[youtube.com/jcmglobal](https://youtube.com/jcmglobal)

## Parts are Parts

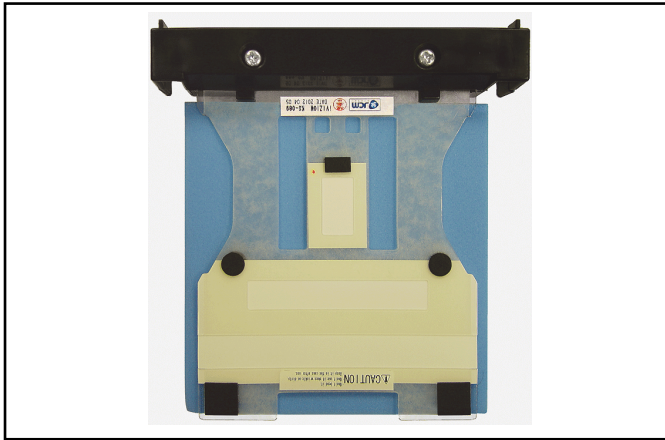


Figure 1 iVIZION Calibration Reference Paper KS-089 (EDP# 211266)

**Part No.** EDP #211266

**Description:** iVIZION® Calibration Reference Paper KS-089

**Usage:** To maintain optimum performance, JCM recommends that the iVIZION Banknote Acceptor be thoroughly cleaned and calibrated annually or at 144,000 transactions, or if the Processor PCB or any Sensor PCB is replaced. The iVIZION Calibration Reference Paper KS-089 (Figure 1) can be used on all iVIZION Units equipped with 69mm or 72mm Bill Guides, or no Bill Guides (86mm). Refer to the [iVIZION Banknote Validator Preventive Maintenance Instructions \(P/N 960-100932R\)](#) for details.

**Note:** iVIZION Calibration Reference Paper must be handled with extreme care. Any dirt, smudges or bends on the Reference Paper will affect calibration.

## Latest JCM Software Listing

UNIT	Country	ID	Version	Check Sum	CRC
UBA-10/11-SS	USA	ID-003	V-2.78-51	D6F5	0653
UBA-10/11-SS	USA	ID-024	V-2.78-24	9478	0C33
UBA-14/24-SS/SU	USA	ID-003	V-2.78-39	C51D	9914
UBA-14/24-SS/SU	USA	ID-0G8	V-2.80-74	8062	8DD4
UBA-14/24-SS/SU	USA	ID-024	V-2.78-36	5CC9	9374
UBA-14/24-SS/SU	USA	ID-028	V-2.78-25	91A6	8F70
iPRO-101	USA	ID-003	V-2.30-25	3112	6B08
iPRO-101	USA	ID-024	V-2.00-10	7CC4	0462
iPRO-101	USA	ID-028	V-1.77-04		2717
iPRO-101	USA	ID-0G8	V-2.20-07	F257	8343
iPRO-101	USA	ID-008	V-2.60-11	104D	71CA
iVIZION-100 SS/SU	USA	ID-003	V-2.80-42	02A1	964D
iVIZION-100 SS/SU	USA	ID-008	V-2.56-20	3B11	1534
iVIZION-100 SS/SU	USA	ID-024	V-2.80-15	AA27	271B
iVIZION-100 SS/SU	USA	ID-028	V-2.80-30	1021	E2E1
iVIZION-100 SS/SU	USA	ID-0G8	V-2.80-38	1905	C088
UBA-10/11-SS	CAN	ID-003	V-2.80-52	14BD	3173
UBA-10/11-SS	CAN	ID-024	V-2.80-25	6A81	0231
UBA-14/24-SS/SU	CAN	ID-003	V-2.80-40	17E2	6B08
UBA-14/24-SS/SU	CAN	ID-024	V-2.80-37	BA95	421D
UBA-14/24-SS/SU	CAN	ID-028	V-2.80-25	F855	AC90
UBA-14/24-SS/SU	CAN	ID-0G8	V-2.80-74	C4C6	CF09
iPRO-100	CAN	ID-003	V2.31-26	F3F1	54EC
iPRO-100	CAN	ID-008	V1.82-02	8572	0CA6
iPRO-100	CAN	ID-024	V-2.31-12	7D39	1C91
iPRO-100	CAN	ID-028	V-2.31-06	D789	0653
iVIZION-100 SS/SU	CAN	ID-003	V-2.81-42	1C45	DC01
iVIZION-100 SS/SU	CAN	ID-024	V-2.81-15	5E3D	31EA
iVIZION-100 SS/SU	CAN	ID-028	V-2.81-30	EFEE	67F1
iVIZION-100 SS/SU	CAN	ID-0G8	V-2.81-38	1285	628F

The Latest JCM Software Listing (shown above) identifies specific software versions that have been released to OEMs. It is the responsibility of the OEM to obtain all required approvals from Gaming Regulators and Jurisdictional Authorities necessary for use of approved software versions. Contact the Game Manufacturer (OEM) for information on specific software releases approved for use within your gaming jurisdiction.

JCM recommends using the latest version for maximum acceptance, security, and performance.

## JCM Service Offerings

JCM offers the following services to help keep your JCM Products performing within factory specifications:

- **Warranty and Non-Warranty Service and Repair**
- **Preventive Maintenance Programs**
- **Custom Training Classes**
- **ICB Data Analysis**
- **Unit Exchange Programs**
- **Validator Performance Analysis**

## JCMedia™ Is The Source For All Your Video Needs!

JCMedia™ solutions incorporate the latest digital display technology (single screen to large scale video wall solutions), digital content creation services and networked solutions for all your media needs. JCMedia now offers the only upgradeable pixel pitch LED Displays using JCM's PIXELPRO™ Display Technology. PIXELPRO products combine unsurpassed color uniformity and the best pixel-to-pixel resolution available in the Gaming industry in an easy-to-install package. PIXELPRO MAX™ provides a high-resolution interlocking panel solution for large scale LED Video screens. PIXELPRO FLEX™ offers flexible panels for curved surface implementations, and PIXELPRO CUBE™ supports 3-D Video Displays. For more information, please visit the JCM Global website at [jcmmedia.jcmglobal.com](http://jcmmedia.jcmglobal.com)!





# FREE JCM TRAINING AVAILABLE 24/7

Technicians need training, but is time or class availability a problem? JCM Online Training offers classes to meet your schedule and your needs. JCM Online Training Programs feature the same content as JCM On-site Training with the added convenience of flexible scheduling. Visit [training.jcmglobal.com](http://training.jcmglobal.com) for more information or to register for classes.

Technical Bulletin 201710 October 2017

## Technical Tips

**Question:** Is there an update available for the iVIZION Calibration Application?

**Answer:** JCM has released the JCM Tool Suite™ Standard Edition Software Application v1.42 (Figure 2). The iVIZION Calibration Application has been updated to version 1.65.00. In this version:

- The Threshold Value for the UV Sensor has been modified for improved calibration and performance.
- The USB Drivers have also been updated for improved connectivity with the iVIZION on Windows 7, 10, x86 and x64 systems.

For optimum iVIZION performance, ensure the latest approved iVIZION Firmware is installed. iVIZION Firmware can be downloaded from the JCM Global Exchange™ Site, located at:

<http://exchange.jcmglobal.com/account/login/>.

The JCM Tool Suite Application is available to download from the Support/Software Tools section of the JCM Global website, located at [www.jcmglobal.com](http://www.jcmglobal.com).

For additional information on JCM Products, visit the JCM Global website at [www.jcmglobal.com](http://www.jcmglobal.com), or contact your local JCM Sales Representative at (800) 683-7248.

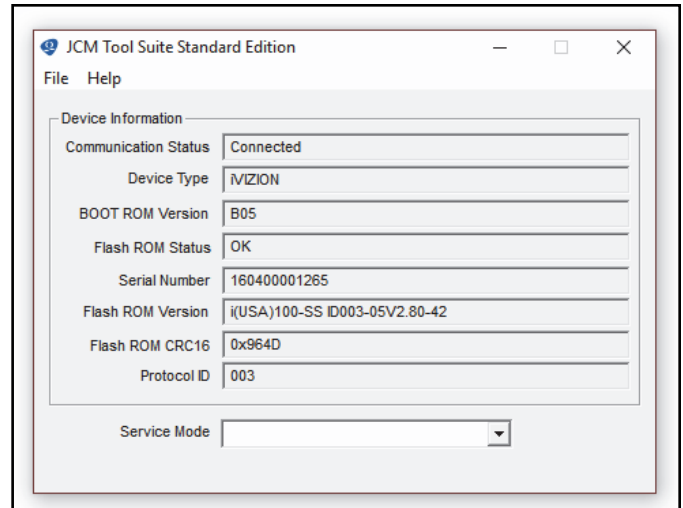


Figure 2: JCM Tool Suite Application v. 1.42 User Interface

## Current Service Manual Releases

Product	Rev.	Product	Rev.
DBV-30X	4	iVIZION	7
DBV-500 Operations Manual	1	Taiko (PUB-7/11)	6
DBV-400 Operations Manual	1	TBV	2
DT-200 BlueWave 2	7	TBV-101-ASH	A
EBA-40	2	UBA-10/11/14/24/25	3b
ICB Service Manual	4	UBA-RC	2
ICB 3.0 Web Reports Ops Manual	2	VEGA	4
iPRO	1	VEGA-RC	3
iPRO-RC	2	FL Operator & Technician's Manual	3
RC-10 Service Manual	1	GEN5™ Operations Manual	1
JCM Tool Suite	4		

To access JCM Product Manuals, please visit: [www.jcmglobal.com](http://www.jcmglobal.com)

JCM TECHNICAL SUPPORT CONTACTS		
<b>Headquarters (Japan)</b>		
Sales and Service	+81-3-5962-3731	hq-jp@jcmglobal.com
<b>Europe, Middle East, Africa, Russia</b>		
Sales	+49-211-530645-50	hq-eu@jcmglobal.com
Service	+49-211-530645-60	
<b>Australia, Oceania</b>		
Sales and Service	+612 96 48 0811	australia@jcmglobal.com
<b>Southeast Asia</b>		
Sales and Service	+853 28 72 2684	asiasupport@jcmglobal.com
<b>North/South America/Canada/Caribbean</b>		
Toll Free Product Support	(800) 683-7248 or (702) 651-0000	support@jcmglobal.com
<b>After Hours Americas Support</b>		
<p>JCM American prides itself in offering the best Customer Service in the industry. We offer a 24 hour After Hours Hotline, where Technical Support Personnel can be reached at any time, 7 days a week. To reach our 24/7 After Hours Hotline:</p> <ol style="list-style-type: none"> <li>1.) Call JCM American at (800) 683-7248.</li> <li>2.) Select "Option 1" and wait for the call to be transferred to the JCM after hours Technical Support line.</li> <li>3.) Speak with a certified JCM Support Technician about your situation.</li> </ol>		

JCM Global is a registered trademark of JCM American Corporation. All other product names mentioned herein may be registered trademarks or trademarks of their respective companies. Furthermore, TM and © are not mentioned in each case in this publication.